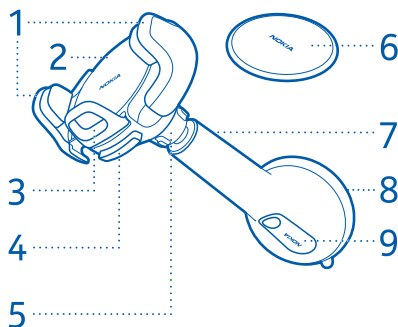


Nokia Mobile Holder CR-123 & Easy Mount HH-22 User Guide

About your car holder

With the Nokia Mobile Holder CR-123 & Easy Mount HH-22, you can access your phone easily at all times. Attach the holder to the windscreen or dashboard of your car, and you're ready to go.

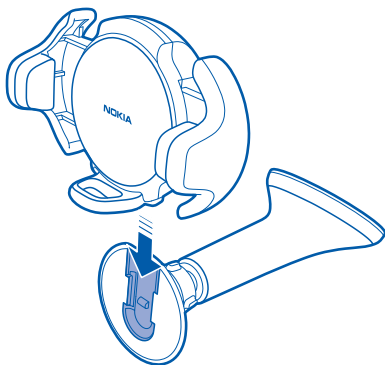
Parts



- 1 Clamps
- 2 Holder
- 3 Bottom support
- 4 Clamp release lever
- 5 Tightening nut
- 6 Mounting plate
- 7 Mount
- 8 Suction cup
- 9 Mount locking lever

Attach the holder to the mount

Slide the holder onto the mount, until it locks into place. To remove the holder from the mount, slide the holder up, until it comes away.

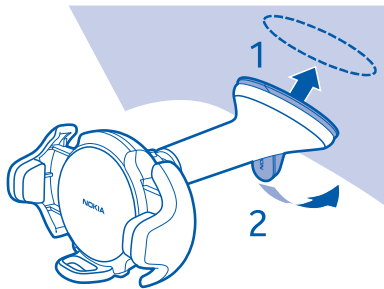


Attach the car holder to the windscreen

Before you start, make sure that both the windscreen and suction cup are clean and dry.

Make sure the mount locking lever is released.

- 1 Place the suction cup against the desired spot of the windscreen, making sure the stem of the mount is extending up and towards you
- 2 Press the suction cup evenly against the windscreen, and press the mount locking lever closed.



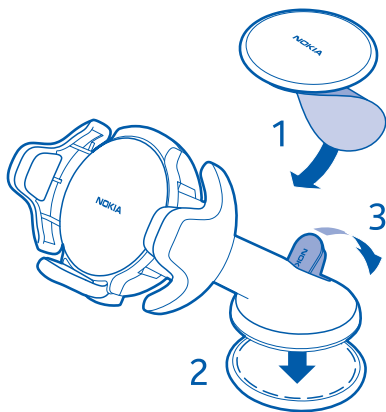
Remove the holder from the window

Release the mount locking lever, and lift from the tab on the edge of the suction cup.

Attach the car holder to the dashboard

Before you start, make sure that the dashboard and the top of the mounting plate are clean and dry.

- 1 Remove the protective film from the adhesive on the underside of the mounting plate. Place the mounting plate on the desired spot on the dashboard. To make sure there is a strong adhesive bond, press the plate down, firmly and evenly.
- 2 Make sure the mount locking lever is released, and position the car holder on the mounting plate, with the mounting stem extending up and towards you.
- 3 Press the mount locking lever closed.

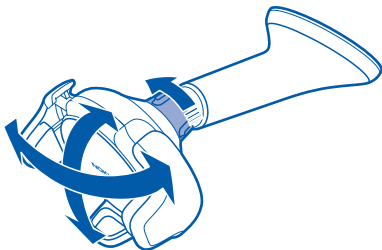


Remove the holder from the mounting plate

Release the mount locking lever, and lift from the tab on the edge of the suction cup.

Adjust the holder angle

To avoid glare and view the screen of your phone more easily, you can adjust the angle of the holder.



Tip: Holder not turning easily? To loosen the tightening nut, turn it clockwise.

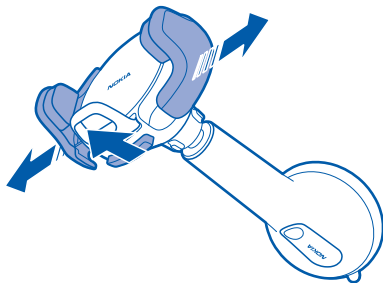
Check periodically that the holder is securely in place. Re-tighten the tightening nut, if necessary.

Place your phone in the holder vertically

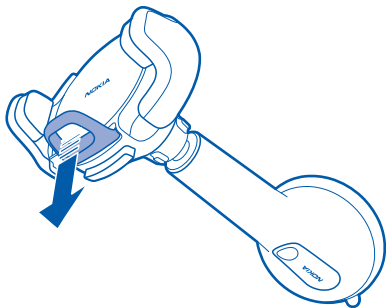
- 1 Turn the holder so that the clamps are on the left and right and the bottom support is pointing down.

Tip: Holder not turning easily? To loosen the tightening nut, turn it clockwise.

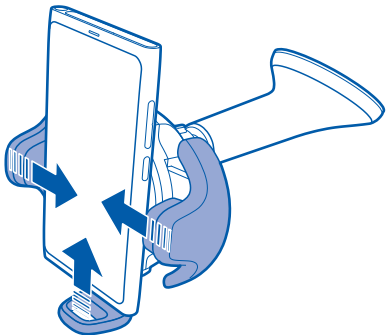
- 2 To widen the clamps, lift and hold the clamp release lever.



- 3 Pull the bottom support out slightly.



- 4 Place your phone in the holder, and adjust the bottom support, until the phone is at a height where it is secure.



- 5 Push the clamps together, until the phone is firmly in place.

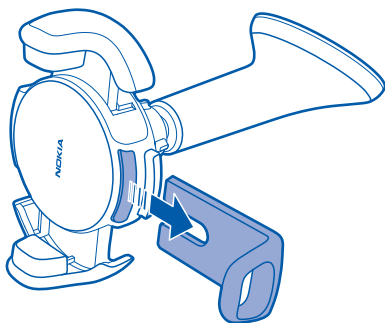
Make sure the clamps don't cover any important controls on your phone, such as the power key.

Place your phone in the holder horizontally

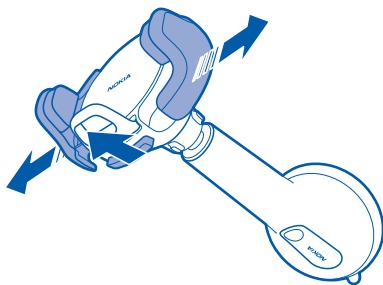
- 1 Turn the holder so that the clamps are at the top and bottom.

Tip: Holder not turning easily? To loosen the tightening nut, turn it clockwise.

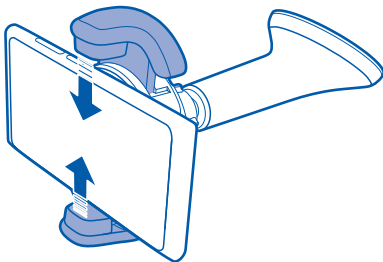
- 2 Pull out the bottom support completely.



- 3 To widen the clamps, lift and hold the clamp release lever.



- 4 Place your phone in the holder.



- 5 Push the clamps together, until the phone is firmly in place.

Make sure the clamps don't cover any important controls on your phone, such as the power key.

Take care of your device

Handle your device with care. The following suggestions help protect your warranty coverage:

- Do not drop, knock, or shake the device. Rough handling can break delicate mechanics.
- Use only a soft, clean, dry cloth to clean the surface of the device.

General safety instructions

Read these simple guidelines. Not following them may be dangerous or illegal. For further information, read the complete user guide.

Obey all local laws. Always keep your hands free to operate the vehicle while driving. Your first consideration while driving should be road safety. Only operate the mounting device or mobile holder if it is safe to do so under all driving conditions.

When you install the mounting device or mobile holder, make sure that they do not interfere with or hinder the steering or braking systems or other systems used in the operation of the vehicle (for example, airbags) or disturb your field of vision while driving.

Check that the deployment of the airbag is not blocked or impaired in any way. Make sure that the mounting device or mobile holder is not installed where you might come in contact with it in the event of an accident or collision.

Periodically check that the suction cup at the bottom of the mounting device is firmly attached to the windscreen, especially if the ambient temperature changes a lot.

Do not place or remove a mobile phone while driving.

To learn more about how to use your product, or if you are unsure how your product should work, see the support pages at www.nokia.com/support.

Recycle

The crossed-out wheeled-bin symbol on your product, literature, or packaging reminds you that all applicable materials must be taken to separate collection at the end of their working life. This requirement applies in the European Union. Do not dispose of these products as unsorted municipal waste. For more information on the environmental attributes of your device, go to www.nokia.com/ecoprofile.



For information on how to recycle your old products and where to find collection sites, go to www.nokia.com/werecycle, or call a contact centre.

Recycle packaging and user guides at your local recycling scheme.

Copyright and other notices

DECLARATION OF CONFORMITY

Hereby, Microsoft Mobile Oy declares that this CR-123&HH-22 product is in compliance with the essential requirements and other relevant provisions of Directive 1999/5/EC. A copy of the Declaration of Conformity can be found at <http://www.nokia.com/global/declaration/declaration-of-conformity>.

TM © 2014 Microsoft Mobile. All rights reserved. Microsoft is a trademark of the Microsoft group of companies. Nokia is a registered trademark of Nokia Corporation. Third party products/names may be TM of respective owner.

The availability of particular products may vary by region. Please check with your dealer for details. This device may contain commodities, technology or software subject to export laws and regulations from the US and other countries. Diversion contrary to law is prohibited.

/Issue 1.1 EN